



www.e2pworld.com
United Arab Emirates | India | KSA

engineering
2 production

E2P WORLD

Your Preferred Partner for Technical Solutions

E2P WORLD

An ISO 9001: 2015 Certified Company

E2P is a worldwide service provider for Engineering, Project Management, Inspection, Quality Assurance, Expedition and Procurement services to fast track projects in the Oil & Gas, Marine, Renewable Energy, Power, Petrochemical, Infrastructure and other related Industrial sectors.

We are a professionally managed Consultancy with specialized Engineering Solutions ensuring the deliverables meet the highest requirements of international standards. E2P is committed to deliver it's services efficiently in the most cost effective manner, to support customer's specific needs at any given level of project maturity and thereby becoming the preferred choice globally. Our worldwide network of experienced expertise personnel combined with strong regional resources offers professional and timely services to customers. We operate on a flat structure with flexibility, mobility and commitment to meet our customer demands.

Vision

Be the preferred choice globally, by delivering optimal services and solutions.

Mission

Being proactive to upgrade our processes, skills, and technologies, we enable our esteemed customers achieve their desired goals in the most economic manner, ensuring safety, quality and sustainability. We raise our standards by learning continuously, identifying and mitigating Risks & Opportunities and carefully applying our knowledge to achieve our Vision in a Safe, Sustainable and Efficient manner

Your preferred partner for technical solutions

Core Values

Integrity

We build trust by conducting our business with the highest ethical standards.

Focus on Customer

We consistently deliver quality service in a timely and efficient manner tailored to our customer's requirements exceeding expectations.

Commitment towards people & environment

We value and respect our partners, employees, customers, suppliers, communities and the environment by conducting business in a socially responsible manner by minimizing the environmental impact of our operations by preventing pollution, reducing energy consumption through sustainable resource use, and implement initiatives that reduce waste and enhance environmental performance

Ownership

We take individual ownership and collective pride in our work to ensure that we maintain integrity and continuously deliver added value to our customers.



E2P WORLD

Sectors

We support our customers to overcome their challenges in the most culturally and geographically diverse environments, for small and large scale projects.

Sectors we specialise include but not limited to:

- Oil and Gas
- Petrochemical
- Marine
- Infrastructure
- Power
- Construction
- Renewable Energy
- Manufacturing

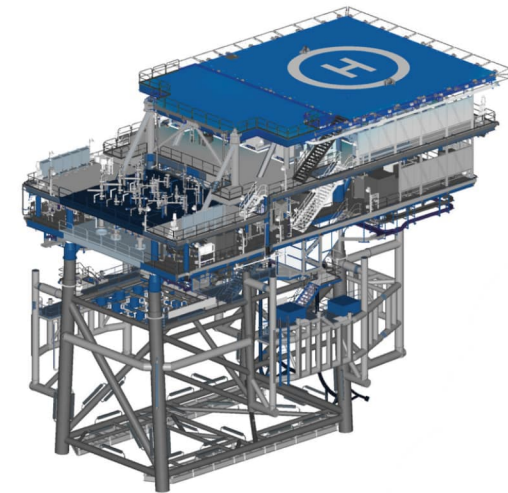
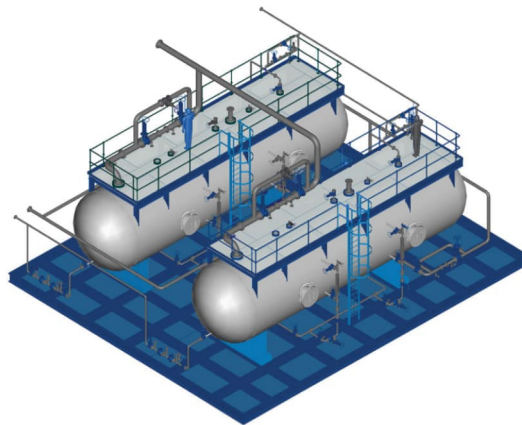
Services

Engineering Services

Conceptual Engineering Design and Management of Detail Design. We offer specialized engineering services to serve customers in Oil & Gas, Marine, Petrochemical, Renewable Energy and Power Industries.

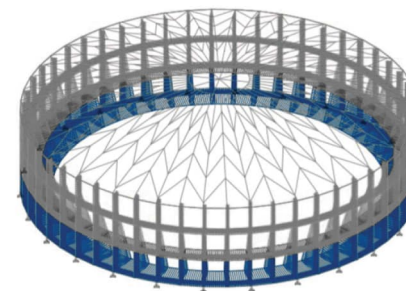
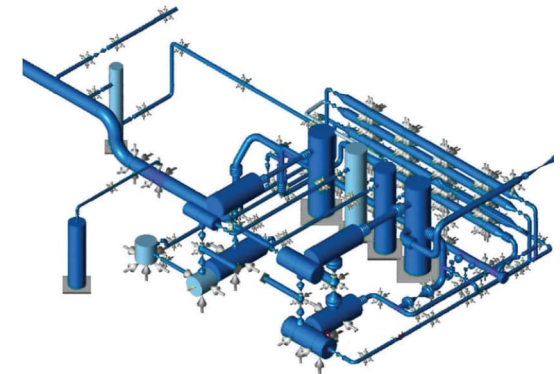
Our Engineering Services include but not limited to:

- Design & Detail Engineering
- Offshore Structural Analysis
- Onshore Structural Analysis
- Plant 3D Modelling
- Mechanical, Process, Electrical & Instrumentation, HVAC, Civil Engineering Solutions
- Static and Rotary Equipment, Storage Tanks Design and Detailing



- Offshore Structures Design and Detailing.
- Subsea Pipelines Design and Detailing
- Installation Aids, Rigging and Lift Point Designs.
- Erection Sequence
- Naval Architecture
- Mooring Analysis
- Pile Drivability

- Piping Design & Analysis
- Creation of Intelligent P&ID's
- Complete Engineering & Design Review for on-shore drilling (Mechanical, E&I, structural, piping, equipment) complying with relevant API specifications.



- As-Built Services
- FEED and Pre-Bid Engineering.
- Review Engineering
- Project Engineering Support at Construction Yards.
- HAZOP/HAZID/HSE Studies.

Services

Marine Services

We provide Marine consultancy, design, survey, inspection and audit services, utilizing our experienced professionals having adequate experience onboard ships and shore. We have a dedicated team of Marine Engineers, Master Mariners, Naval Architects, Structural, Piping and Electrical Engineers in Marine field to provide support and obtain prompt, reliable and cost-effective solutions. E2P Eco Green solutions provides extensive support to owners for compliance with current and upcoming IMO regulations.

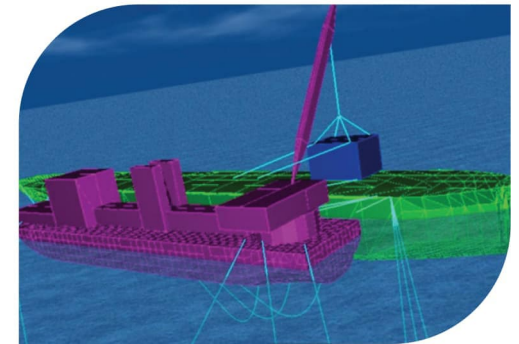
Our services include but not limited to:

- Ship Design and Naval Architecture Calculations
- Marine transportation and Engineering Analysis
- Structural and Stability calculations
- Inclining experiment
- Load out & Transportation Analysis including Design of Grillage and Sea Fastening Arrangements
- Structural Engineering
- Jetty Strength and Quay Wall Strength Analysis.
- Lifting Analysis
- EEXI calculation and compliance strategy



- All types of Marine Surveys (On hire/Off hire, Towing, Draft, Bunker, Cargo loading/discharge, Lashing surveys, 3D Scanning, Bathymetric surveys, Thickness gauging etc)
- Load Out Surveys.
- Retrofit Engineering (BWTS, Scrubber etc.)

- Mooring Analysis
- Software development (Planned Maintenance Systems, Loadicator)
- Vessel Inspections and Condition Assessment Surveys.
- Dry docking specs preparation and supervision.
- Digitalisation of Vessel Drawings and Documents
- Preparation and Updating of Shipboard Manuals.
- Work Permits (Hot work/Gas free), Container Inspections etc.
- ISO/ISM/ISPS/OHSAS/MLC Audits and Pre-Vetting Audits (SIRE/CDI/OVID).



Your preferred partner for technical solutions

E2P WORLD

Services

3D Scanning | Dimension Control | Survey

E2P offers precise Dimensional Control and Survey solutions using advanced Total Station Machines & technology, ensuring high-accuracy measurement, alignment, and positioning for industrial and construction projects.

Also, we deliver world-class 3D Laser Scanning for accurate data capture and for detailed engineering deliverables using our high-precision scanners, and we generate as-built models and drawings for all disciplines.

Our services includes the below, but not limited to;

- As-Built Data Capture & Verification
- Dimensional Control Inspection & Survey
- Reverse Engineering of Existing Facilities
- 3D Modelling and Intelligent Plant Modelling
- Fabrication Fit-up & Installation Accuracy Checks
- Structural & Equipment Positioning Verification
- Pre-fabrication & Modular Interface Survey
- Digitalization of plant Engineering Documentation



3D Scan



3D Model

Inspection and Expediting Services

We offer a complete range of services that comprise Project Quality Control Inspection, Inspection of Mechanical and Electrical equipment at the vendor's works, Pre-Shipment Inspection and Expediting at vendor's works. E2P has the capability to provide professional, cost effective and timely Second/Third Party Inspection Services worldwide through our strong network of associate companies in Europe, USA, China, India, Far East & Middle East. Our Inspection services for long and short-term projects onsite (local and overseas) covers but not limited to:



- Fabricated items such as Pressure vessels, Heat Exchangers, Piping, Boilers, Cranes, Structural, Package Skids etc.
- Material Inspection for Plates, Pipes, Tubing, Valves, Fittings, Fasteners, Gaskets, Castings, Cables, Electrical Panels etc.
- FAT witness for Pumps, Compressors, Turbine, Electrical Motors, transformers etc.
- Witness and Certify Welding Procedures and Welders' Qualifications.
- Training for Inspectors, NDT Technicians and Welders.
- Coating Inspections
- Periodic Shutdown /Turnaround Inspection



Your preferred partner for technical solutions

E2P WORLD

Services

Our Inspectors have vast industry experience and possess professional qualifications such as CSWIP 3.1/3.2, AWS CWI/SCWI, API 510/571/579/653, BGAS/NACE Painting certification, ASNT/PCN NDT certifications or equivalent.

Technical Secondment & Resourcing Solutions

E2P provides quality, cost effective and professional Recruitment/Manpower Secondment solutions for short and long term basis on various projects for Oil & Gas, Marine, Petrochemical, Renewable Energy and Power Industries.

Our services include but not limited to:

- Supply of Inspectors, resident/call-out for various categories such as Civil, Welding, Piping, Pipeline, Rotating and Stationary Equipment, Structural, Electrical & Instrumentation, Coating, Insulation etc.
- Supply of Project Managers, Construction Managers, Project Engineers, Specialized Engineers (Process, Piping, Structural, Pipeline, Naval Architect, E&I, QA, Welding, Estimation, Planning etc.)
- Supply of Design Engineers, Quality Managers, Quality Engineers, Draftsmen, Document controllers, Safety officers and other Project based staffing requirements.

Project Management and Procurement Services

Our service, in executing complex projects starts from conducting feasibility studies, preparing contractual documents suiting customer requirements, onsite supervision, completion and handover. We offer the service of professional Project Managers and related support staff for the Project tenure.



Procurement process is well managed by us, starting from preparation of technical and contract documents through delivery to the end user. E2P World's technically qualified supply chain personnel, global networks and strong vendor relationships facilitate our customers to mitigate procurement and logistics overhead costs ensuring effective, expediting deployment and reliable delivery of equipment and materials.

Consultancy Services

We carry out Independent Engineering Review, Quality and Technical Audits. Our services includes but not limited to Energy Audits, Quality Management, Technical Documentation Review, Marine Consultancy and Marine Insurance Claims.

Electrical and Automation Services

- Power Management System
- Tank Gauging System
- Alarm Monitoring System
- Fire and Gas Alarm
- Wireless Control System
- General Alarm System
- Vessel Management System
- Emergency Stop System
- Valve Control System
- Engine RPM Calibration
- Load Cell Calibration
- Fixed Gas System Calibration
- Generator Synchronisation



Industrial Training

Industrial Training and Certification Services

E2P World Technical Services supports aspiring and working professionals by guiding and placing them in the industry, through its altruistic and professional Industrial Training Services. The methodology followed is screening, skill assesment and skill upgradation.

E2P World aims to develop confident and adaptable professional with good collaborative and team working skills through online and offline training sessions.

E2P as a training partner deliver

- Customized training designed for working professionals and fresher.
- 100 percent placement assistance and guidance
- Flexible course timings
- Real Time Industrial Case Discussions
- Live Interaction with Working Professionals
- Online Training at your convenience
- Practice Professionalism with E2P
- Project Support and Guidance
- E2P is Distinctive as we mentor our professionals besides training
- Join and become a part of E2P Community - Walk with the Right Training, Mentoring and Coaching Partner



Your preferred partner for technical solutions

Training Quality & Evaluation

E2P World Technical Services provides world class training complying with the latest International Industrial Standards, needs and criteria. Our training methodology is carefully selected by assessing the potential industrial skills requirement, enhancing it and delivering to eligible candidates.

We are committed to help the E2P Trained Professionals with post training placement support and guidance. Training evaluation will be carried out strictly complying with the standard industrial criteria.

Courses Offered

01. Certified Quality Professional
02. Certified Oil and Gas Professional
03. Welding Inspection Professional
04. NDT Inspection Professional
05. Material Inspection Professional
06. Piping Inspection Professional
07. Structural Steel Inspection Professional
08. Pressure Vessel Inspection Professional
09. Storage Tank Inspection Professional
10. Heat Exchanger Inspection Professional
11. QAQC [Mechanical]
12. Industrial Drawing Interpretation
13. Codes and Standards Interpretation
14. QMS Documentation
15. Preparatory Courses
 - a. API Exam Preparatory Course
 - b. AWS/CSWIP Exam Preparatory Course
 - c. NDT-ASNT Level III Exam Preparatory Course
16. Marine Inspection Professional
17. E&I Inspection Professional
18. Professional Fabricator
19. Professional Welder / Welding Operator
- Performance Qualification & Testing
- WPS/PQR Qualification & Testing
- Welder Training & Welding Skill Enhancement
20. P.G.D in Offshore Structures & Drafting (MicroStation & 3D Modelling)
21. P.G.D in Process Design & Equipment Design Engineering
22. P.G.D in Process Design & Piping Layout Design Engineering
23. P.G.D in Process & Mechanical Design of Equipment
24. Certificate Program in Process Safety & Management
25. P.G.D in Piping Layout Design & Drafting (AutoCAD / PDMS)
26. P.G.D in Pipe Stress Analysis (Caesar II)
27. P.G.D in Piping Design Engineering & Pipe Stress Analysis (AutoCAD / PDMS / Caesar II)
28. P.G.D in Pressure Vessel & Equipment Design Engineering

E2P WORLD

Product Development

Our Product Development wing support our customers to overcome their challenges by providing customized and innovative product solutions & technologies exclusively developed by our R&D - Product Development team to cater the needs for small- and large-scale projects in different sectors such as: Oil & Gas, Marine, Power, Renewable Energy, Petrochemical, Infrastructure, Construction & Manufacturing.

- Air Operated AC
- Semi-conductor Operated AC
- Battery Charger
- DC Power Supply
- Battery Equalizer
- Jumbo Indicators
- Current Monitor
- Vertical Wind Turbine



Our Team

TEAM E2P have all the relevant professional, commercial, operational and technical skills required to manage and understand the needs of our privileged customers. E2P is an approved vendor for various leading (EPC) companies. We have a highly capable team of experts including Engineers, Inspectors, and Technical Professionals with International Certifications, aided with latest software and technology solutions in relevant fields, to assure the best of engineering and technical services. Our personnel are assigned to projects after complete evaluation of qualifications and experience in relevant field to ensure complete compliance to international standards and customer requirements.

Your preferred partner for technical solutions

Offices

E2P World Group of Companies Corporate Head Office

E2P World FZC

P.O. Box 513651, SAIF Zone,
Sharjah, UAE.

E2P Consultancy and Services LLC

P.O. Box 31141, Dubai, UAE.

E2P World Technical Services LLC

Building 1, Tower 1, Mazyad Mall,
Mohamed Bin Zayed City,
P.O. Box 20319, Abu Dhabi, UAE

E2P World Engineering & Marine Services Pvt. Ltd,

TC 63/608,
Thiruvananthapuram - 695527
Kerala, India

Tanamiyya Al-Marafaq

Novotel Business Park Gate 4, 1st Floor,
King Fahad Highway , P.O. Box 6140,
Dammam, Kingdom of Saudi Arabia

E2P Magnus Global Tech Pvt. Ltd

No.11, 1st Floor,
Green Valley Township,
Bharathnagar 2nd Stage,
Bengaluru - 560 091

 www.e2pworld.com  info@e2pworld.com

 [/e2pworld](https://twitter.com/e2pworld)  [/e2pworld](https://facebook.com/e2pworld)  [/e2pworld](https://in.linkedin.com/company/e2pworld)

 +971 65664429
+971 556395563
+91 9778412341
+966 138233365
+966 538036929



E2P WORLD